

Features

New comer with refined design.

Round and discreet looking case.

Projection screen fabric complies with the highest standard for fire safety (M1).

Pre programmed mechanical fine tuning of the extending/retracting of the projection screen fabric facilitates rapid installation.

Strong motor with 5-year warranty and CE quality mark.

Choice of mounting on wall and/or ceiling via flexibly placed brackets.

Options

- ▶ Screen fabrics Matte White P and Rear projection fabric.

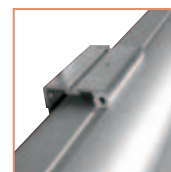
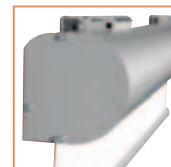
Accessories (see pages 76 and 77)

For mounting

- ▶ Special ceiling brackets 10800078
- ▶ Special wall brackets 10080077

For operation

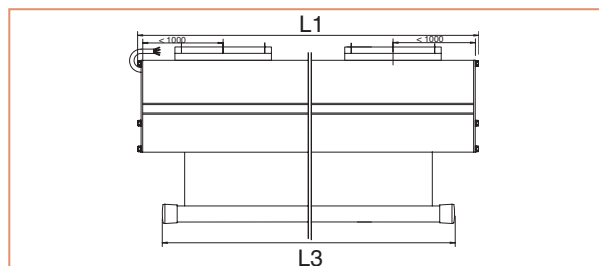
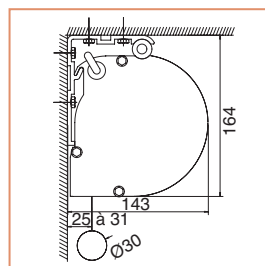
- ▶ Infrared remote control (IR) 10800012
- ▶ Radio frequency remote control (RF) 10800013
- ▶ Key switch 10800009



- ▶ Large screen projection screens available in widths from 4 to 5 metres. Integrated in anodised aluminium profile casing.

Technical characteristics

- ▶ Sturdy case equipped with anodised aluminium at the front and back.
- ▶ Matte white P: vinyl film; gain 1.0 and viewing angle 50° L/R.
- ▶ Rear projection screen fabric: translucent grey vinyl; gain 1.8 and viewing angle 30° L/R.
- ▶ The projection screen fabric has a horizontal seam every 1.9 metres which is invisible during projection and slightly visible with rear projection.
- ▶ Projection screen fabrics satisfy the requirements for fire-resistance of construction materials and components (M1).
- ▶ All electrical projection screens satisfy the following product safety standards: IEC 60335-1; 60335-2; DIN19045-5 and IEC 61000 for Electro Magnetic Compatibility.
- ▶ Somfy motor with 17 RPM (revolutions per minute) and 240 Watts. Motor is mounted on the left.
- ▶ Easy to install for wall or ceiling with 2 large brackets supplied.
- ▶ Available with a 10-metre connection cable and separate switch.



Screen size h x w cm	Case		Net weight in kg	Up/down in sec.	Screen fabric	
	L1 mm	L2 mm			Matte White P prod.code	Rear projection prod.code
300x400	4160	4080	55	28	10130230	10130231
350x400	4160	4080	57	33	10130232	10130233
400x400	4160	4080	58	37	10130234	10130235
300x500	5160	5080	65	28	10130236	10130237
375x500	5160	5080	67	35	10130238	10130239
400x500	5160	5080	68	37	10130240	10130241

Electric projection screens (> 3-metres wide)